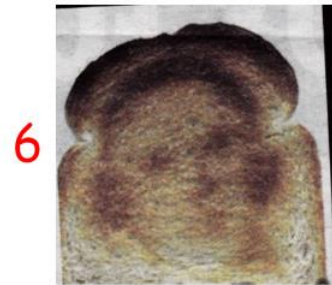
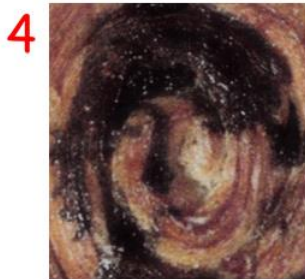
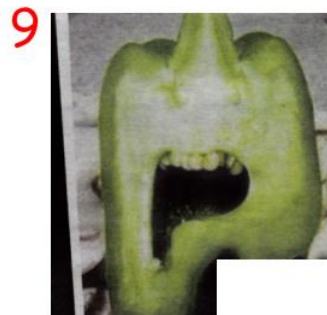


Food faces.

Who's faces appear in these foods?
Select from the list below.
Write the letter by the picture.



- a/ Rory McIlroy
- b/ Duchess of Cambridge
- c/ Victoria Beckham
- d/ The Joker
- e/ Claudia Winkleman
- f/ Mother Theresa
- g/ Sylvester Stalone
- h/ Prince Harry
- i/ Donald Trump
- j/ Barak Obama
- k/ Darth Vader
- l/ Jesus
- m/ Whoopi Goldberg
- n/ Ed Sheeran



twitter  @bayhorsequiz